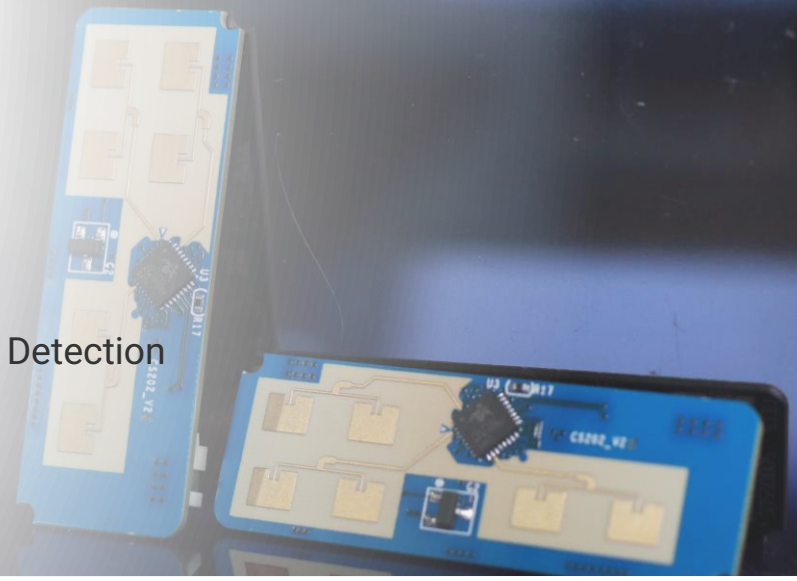


XenP202TE Multiple Trajectory Detection

High-Precision Multi-Person Trajectory
mmWave Sensor



Featuring the ICL1122 mmWave sensor SoC and trajectory tracking algorithms, it can detect multi-person positions in real-time, differentiate individual trajectories in the scene, and predict movement trends. Applications include integrated radar-vision security systems, AC airflow adjustments, smart speakers control, and intelligent sensing lights.

Specifications	XenP202TE ARM Cortex M4	CSP202TE RISC 32-bit
Operating Frequency	24 ~ 24.25 GHz, FCC/CE compliant	
Detection Range	0 ~ 8 m (detection area adjustable)	
Detection Angle	$\pm 60^\circ$ (azimuth); $\pm 30^\circ$ (pitch)	
Tracked Targets	3 persons	
Operating Voltage	5 V	
Sensor SoC	ICL1122 SoC (1T2R)	
Interface	UART, TTL	
Data Refresh Rate	19 Hz (Max.)	
IAP	Support	
Average Current	97 mA	83 mA
Hardware Size	15 mm x 40 mm	15 mm x 44 mm

Features
Multi-target Detection: Real-time detection of multiple human targets
Stable Tracking: High-sensitivity trajectory information of human motion/micro-motion
Accurate Positioning: Range accuracy of 15 cm, angle accuracy of 10°
Minimalist Size: Compatible with various product designs

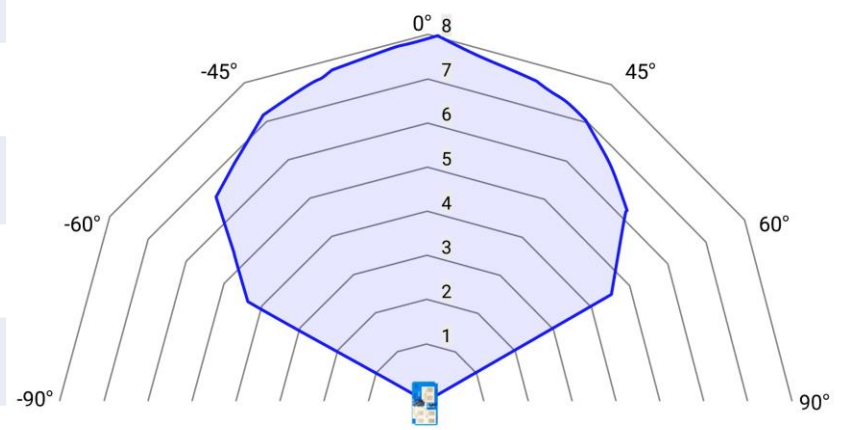
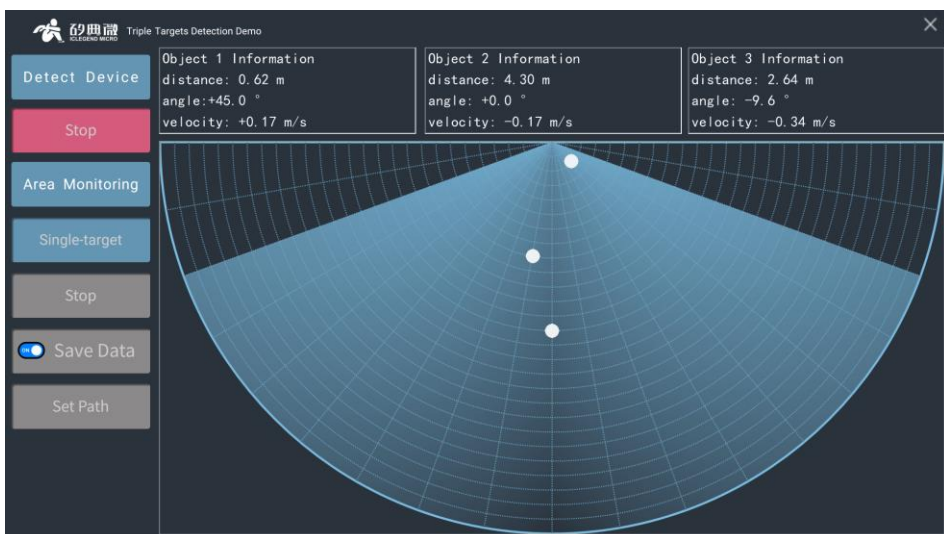


Illustration of Detection Range



Visualization tool for multi-target detection
Support monitoring area and detection area setting



Smart Appliances



Smart Bathrooms



Health and Wellness



Smart Lighting